

International Summer School Bali



24

Preface

In autumn 2024, the 'Bali Summer School 2024' took place as part of an internationalisation programme led by Prof. Christine Remensperger. As part of this two-week workshop, Prof. Gusti Ayu Made Suartika, PhD. – lecturer at Udayana University in Denpasar, Bali, Indonesia (as Head of the 'International Programme of Tropical Engineering') – was our guest at the Department of Architecture.

Together with Prof. Christine Remensperger, she taught the module 'Special Areas of Architecture' as an intensive seminar. Thirteen students worked in groups to develop a design for a 'Sustainable Resort – Bali' in the context of Balinese culture and landscape. In addition to the use of local resources, the focus was on the traditional architecture and building culture of Bali. As well as on the tropical climate, dealing with the topography and incorporating views of water and the attractive landscape.

The students were highly motivated to work on models, sketches and CAD drawings every day and were guided and supervised by the teachers on a daily basis. As an input, there were several lectures on topics relating to 'traditional Balinese building culture and construction' and their rules – which are very often based on religious rituals. At the same time, Balinese students from Udayana University were working on other construction tasks, some of them on the same site. Our students had an in-

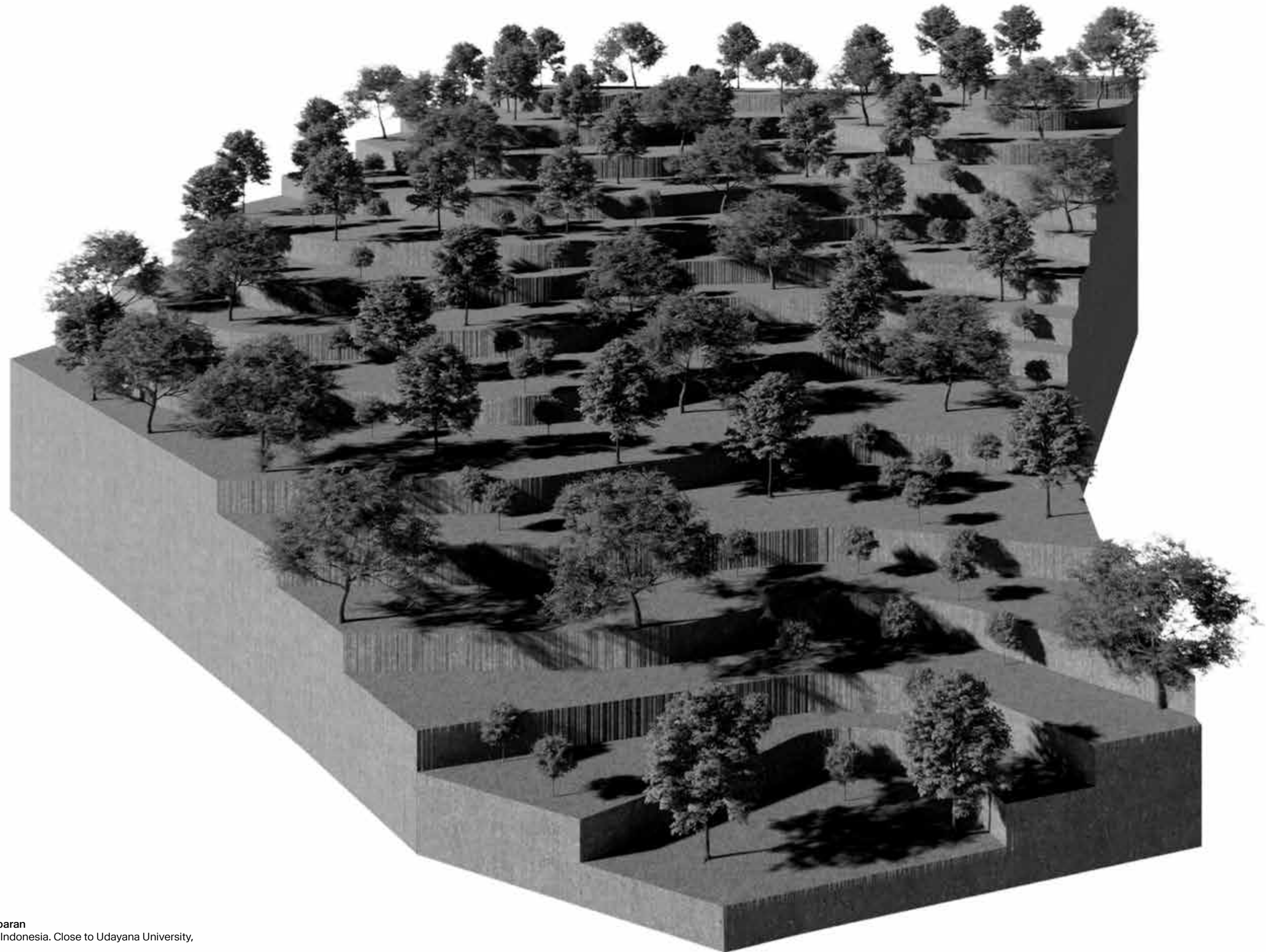
sight into their working methods and project status via a video conference. The results of our students' designs were also examined at the end of the semester and could therefore be recognised in the course of studies. All the work results are summarised and documented in this printed and digital brochure. Each work result is presented in detail on four double-page spreads.

At the end of the course as a sign of friendship and solidarity – also in the context of the discussions on the topics of 'global climate change and scarce resources' – we planted a few trees on our 'Ersttrees site' in Dortmund-Dorstfeld together with Prof. Dr Gusti with the participation of students – accompanied by Guido Kollert and Laura Wiederhold, who generally supported the workshop with advice and action. We agreed that the topics – a traditional, local and low-resource building culture – should be given more attention in teaching in the future and that we should endeavour to organise a further event – joint teaching and projects. An invitation to teach at Udayana University Denpasar will therefore be focused on – so that we can continue the cultural and professional exchange and discourse in the country. We will also remain in friendly contact.

Prof. Christine Remensperger

Content

8 – 17	Jonathan Kleff & Yanick Neugebauer The Way of Serenity
18 – 27	Kübra Büyükdag & Selin Özkan Falling Green
28 – 37	Marzena Henschel & Rabia Kabagac Jimbaran Resort
38 – 47	Patrick Raab & Celine van Eden Harmony Home
48 – 57	Süra Örgen & Lakgitha Thanendran Sustainable Resort Bali
58 – 67	Ali Ekin & Kaan Kamali Desa Harmoni: Living in harmony
68 – 69	Impressions of workshop, lectures and tree planting

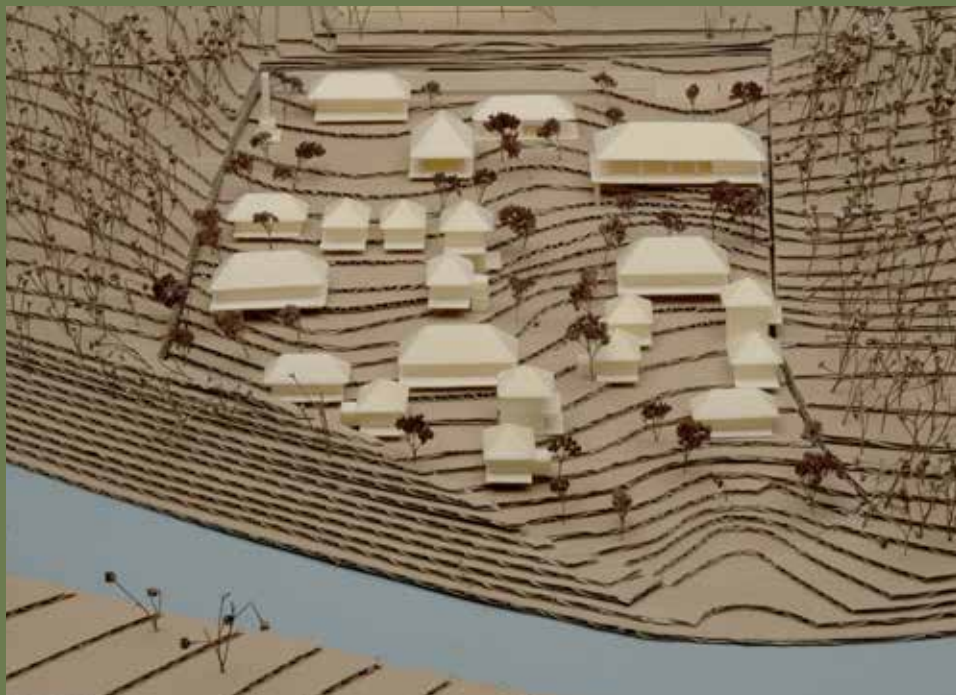


Fictitious property in Jimbaran
 (southern peninsula - Bali, Indonesia. Close to Udayana University,
 Denpasar branch.)

Character: Steep slope, partly high tree population, with view to a
 river-like water basin that would have to be renaturalized.
 The property was proposed by Udayana University.

The Way of Serenity

Jonathan Kleff & Yanick Neugebauer



The Way of Serenity

Jonathan Kleff & Yanick Neugebauer

The central aspect of the design process was the examination of Balinese architecture. The guidelines for the resort are based on traditional 'Balinese compounds' – an ensemble of houses for one family – whose construction follows strict cultural rules. Characteristic for the compounds are (semi-)open pavilions, the enclosure of the property by a wall, the construction of religious areas and the use of local materials such as bamboo, teak, along-alang grasses and natural stone, which are not only aesthetic but also functional purposes – such as natural lighting and ventilation. Another important aspect of the design is the organisation of the functions on the site from the hilltop down to the valley into three 'increasing quiet zones'. It is clearly arranged from public to private and carefully integrated into the topography in clusters – following a strictly orthogonal pattern down the slope according to functional criteria.



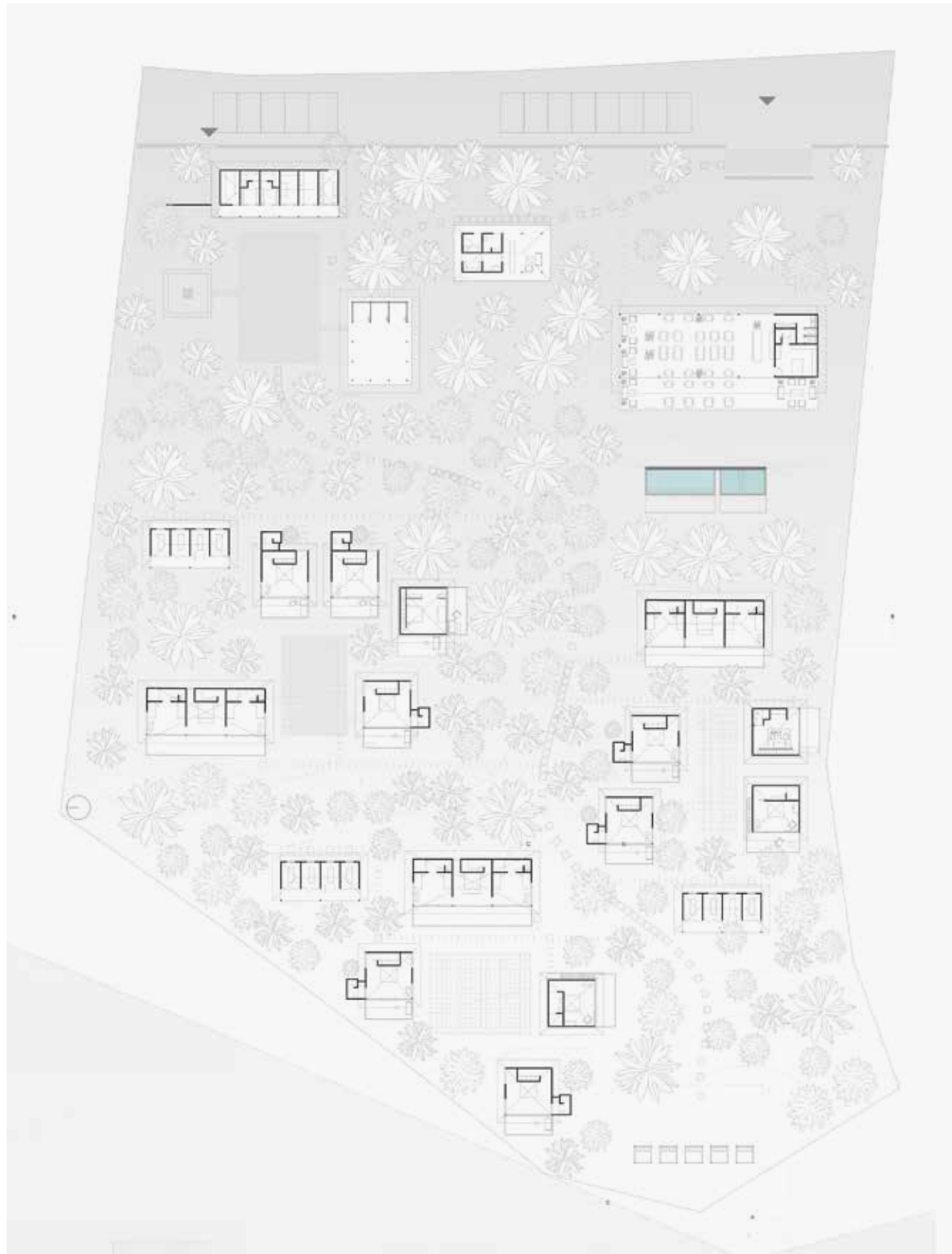
Black map



First sketch



Site plan 1:500



Floor plan 1:200



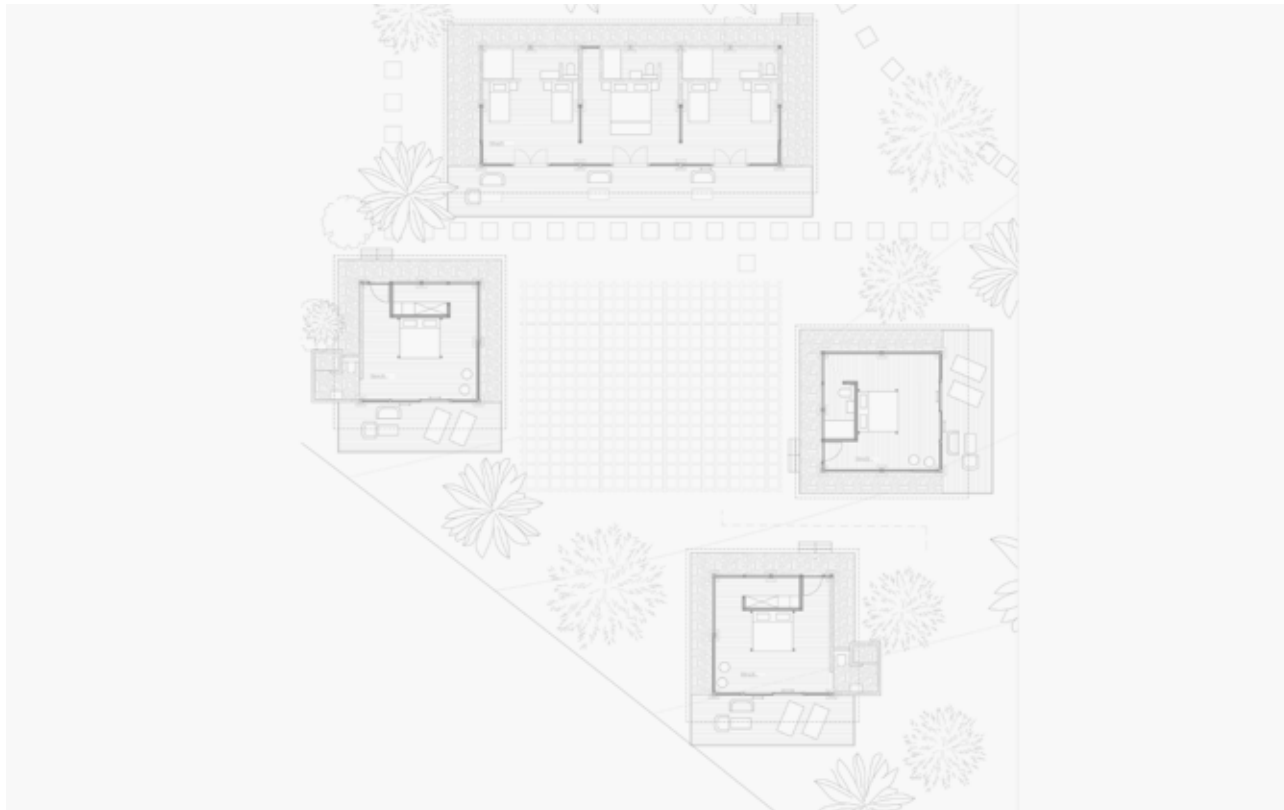
Section I elevation east-west 1:200



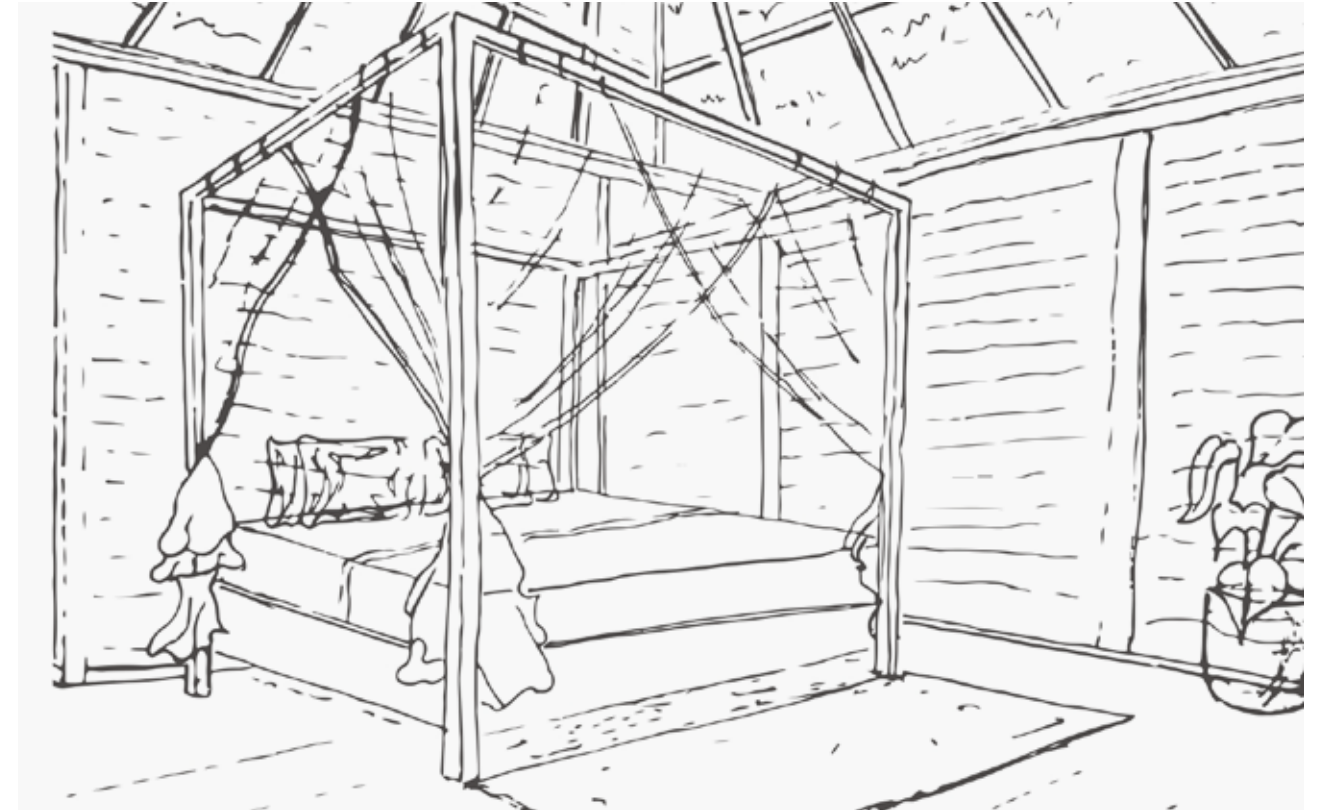
Elevation west 1:200



Section I living area 1:50



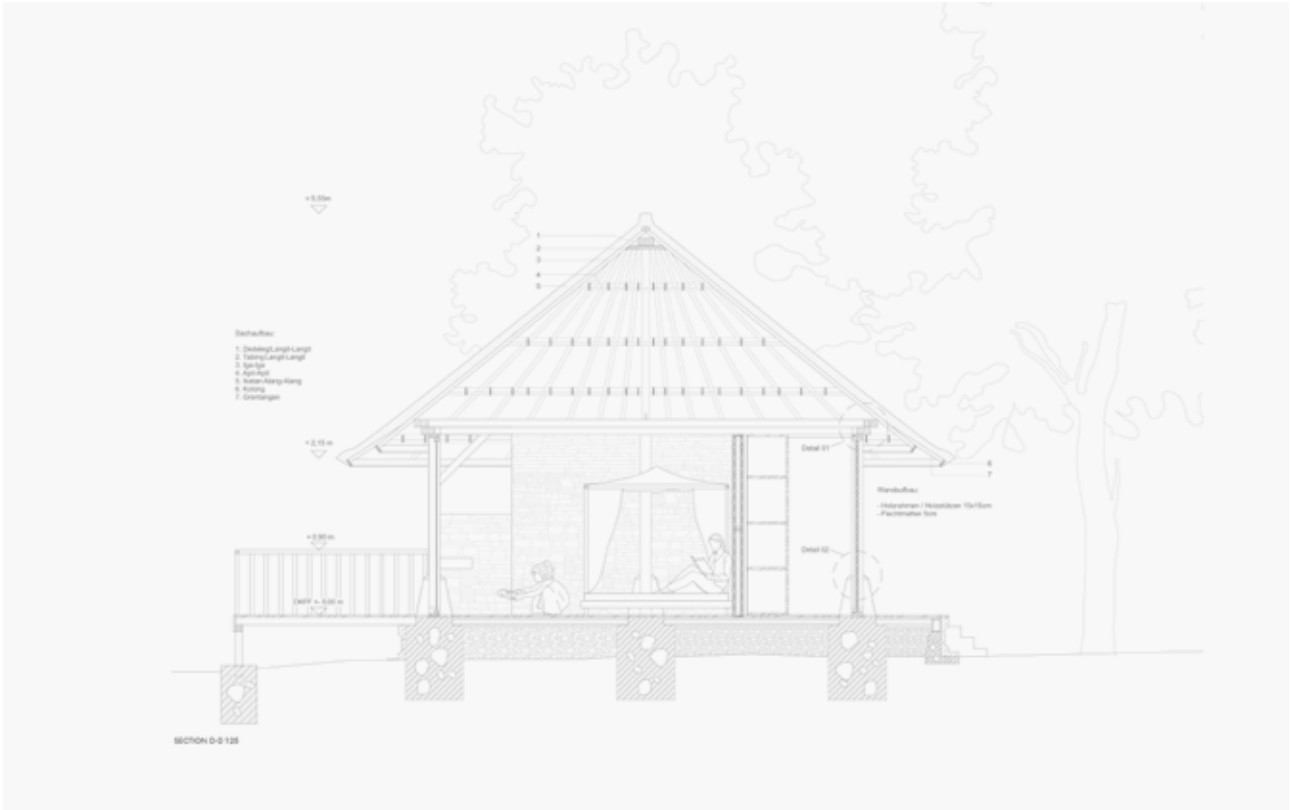
Floor plan I living area 1:50



Sketch I double-bedroom



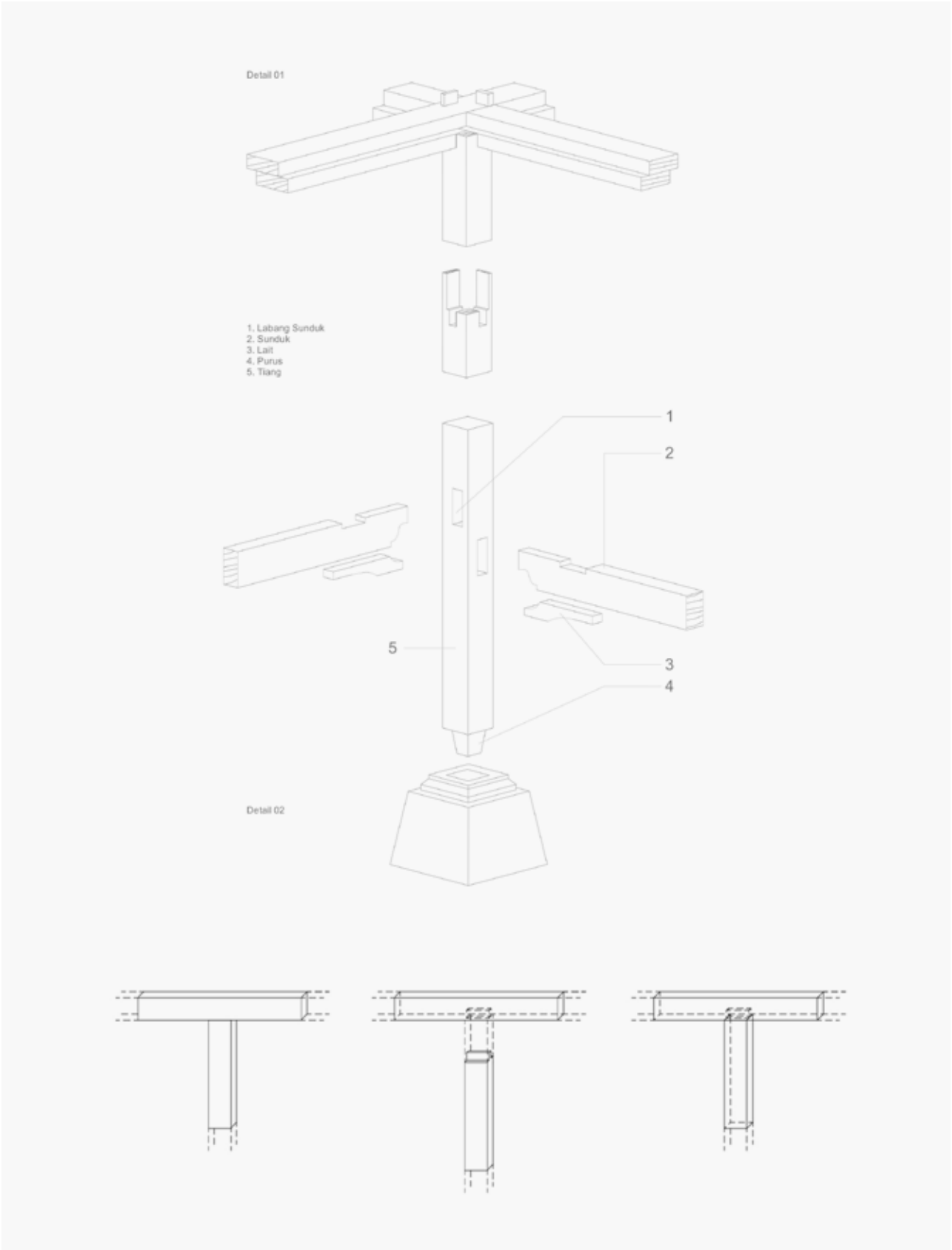
Sketch I courtyard I living area



Section I construction 1:50



Floor plan I construction 1:50



Construction I detail

Falling Green

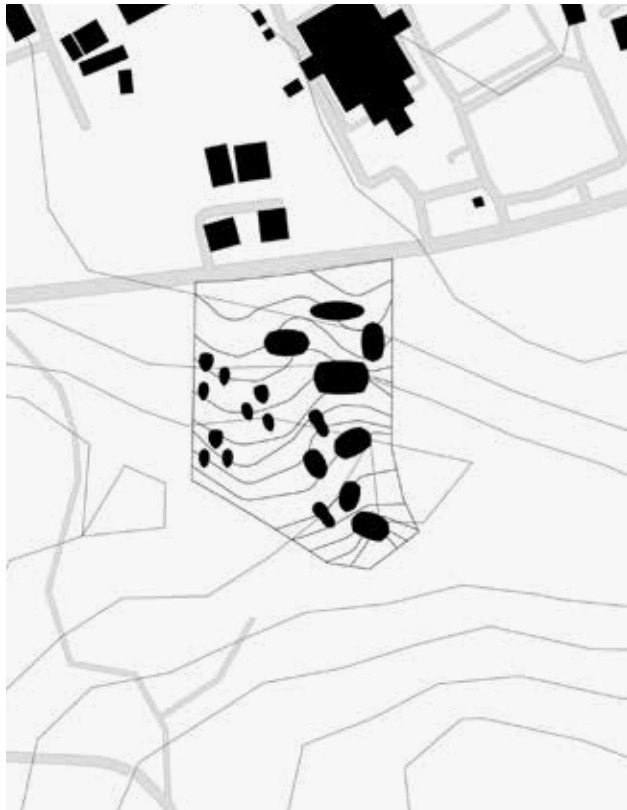
Kübra Büyükdag & Selin Özkan



Falling Green

Kübra Büyükdag & Selin Özkan

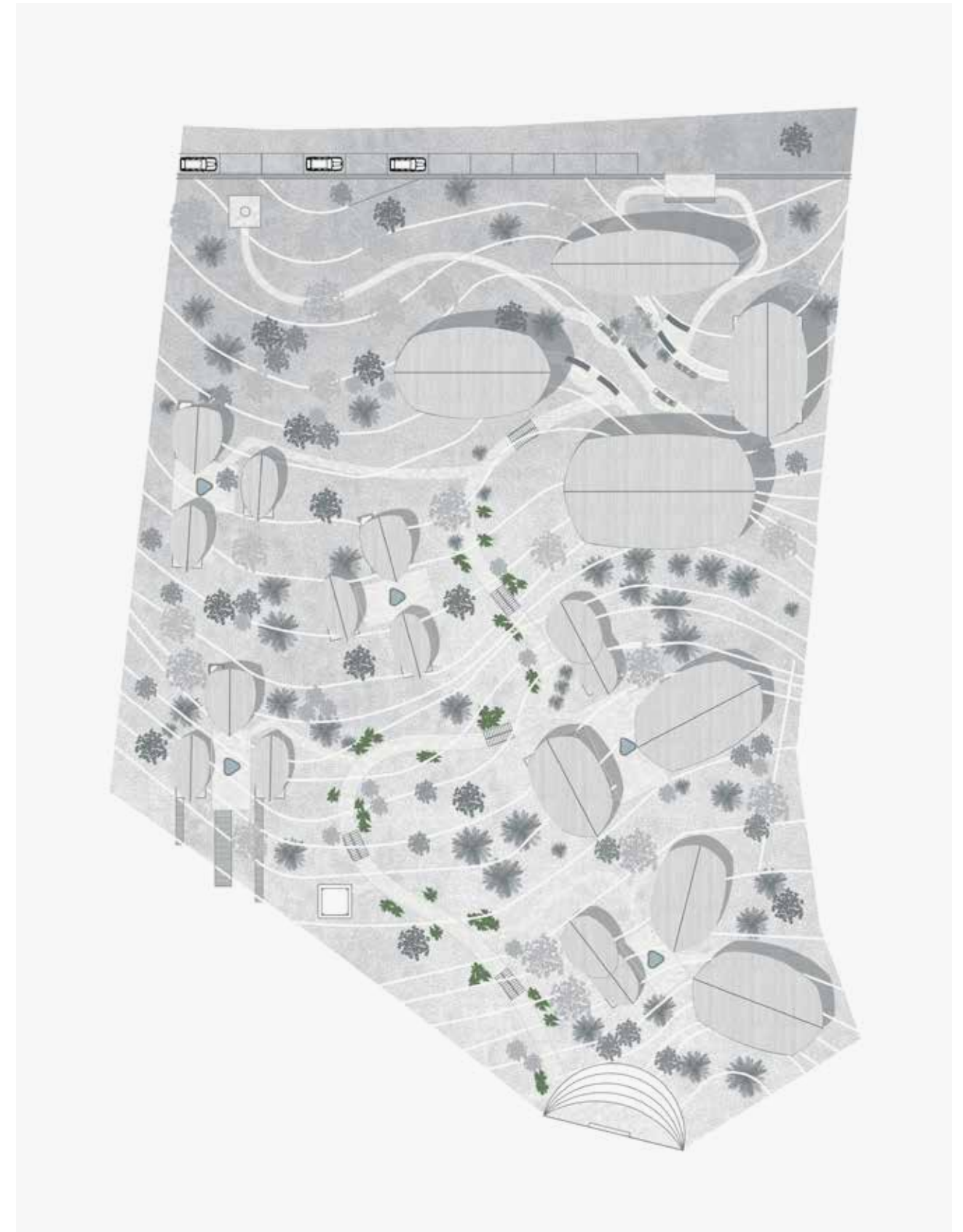
The design of 'Falling Green' resort is based on traditional Balinese architecture, which is characterised by its harmonious integration into the landscape. Access is provided through a gate situation, with separate entrances for staff and guests. The reception area is divided into three pavilions: the spa area; a spacious restaurant with terrace – which offers a view of the surroundings and a multifunctional yoga pavilion, which can also be used for cultural events in the evening. From the entrance, the path follows the topography in sweeping movements into the steep landscape to the residential clusters and a circle by the water. The pavilions are divided into different types and sizes, which cater to the most diverse needs of the guests. The open design, the use of local materials such as bamboo, wood or alang-alang grass roofs and the natural design is intended to create an authentic effect and a connection to the surrounding nature.



Black map



First sketch



Site plan 1:500



Floor plan 1:200



Section east-west 1:200



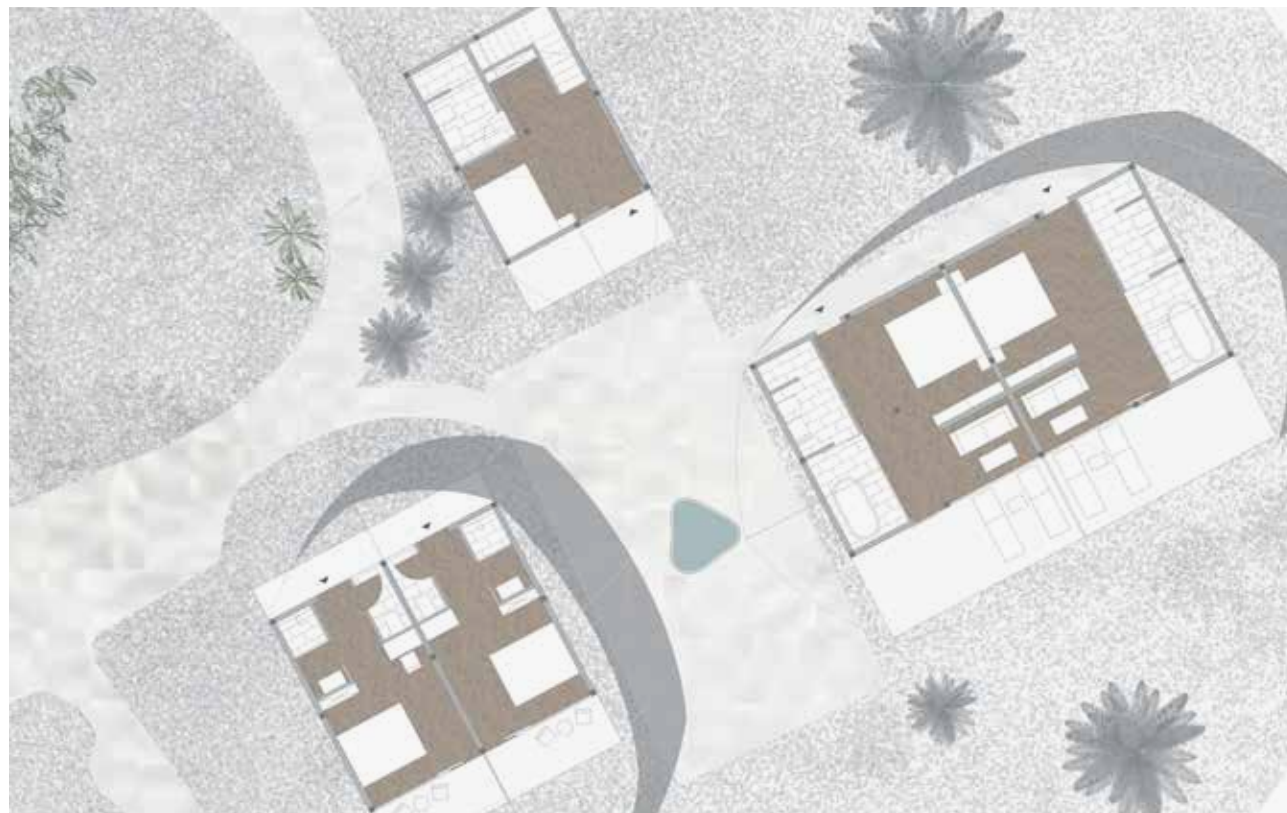
Elevation west



Visualization „Falling Green“ | main path



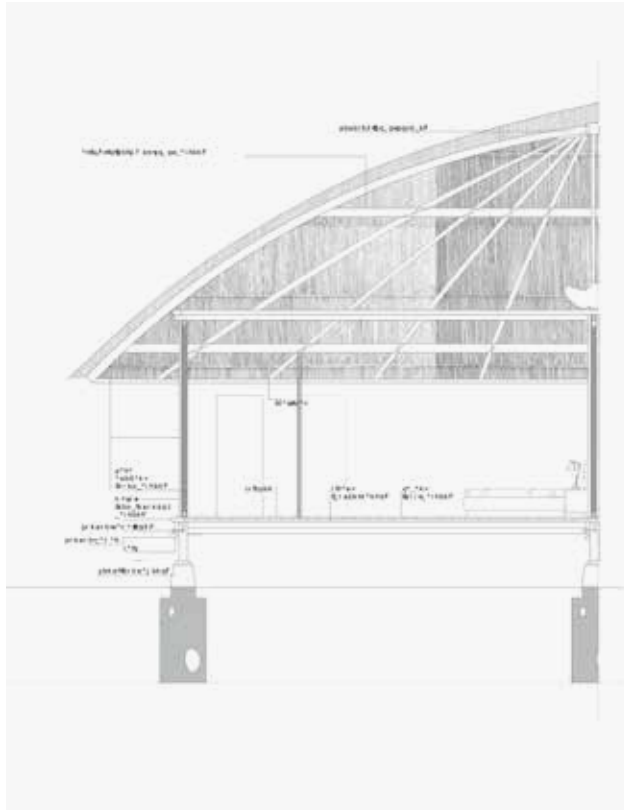
Section | house group 1:50



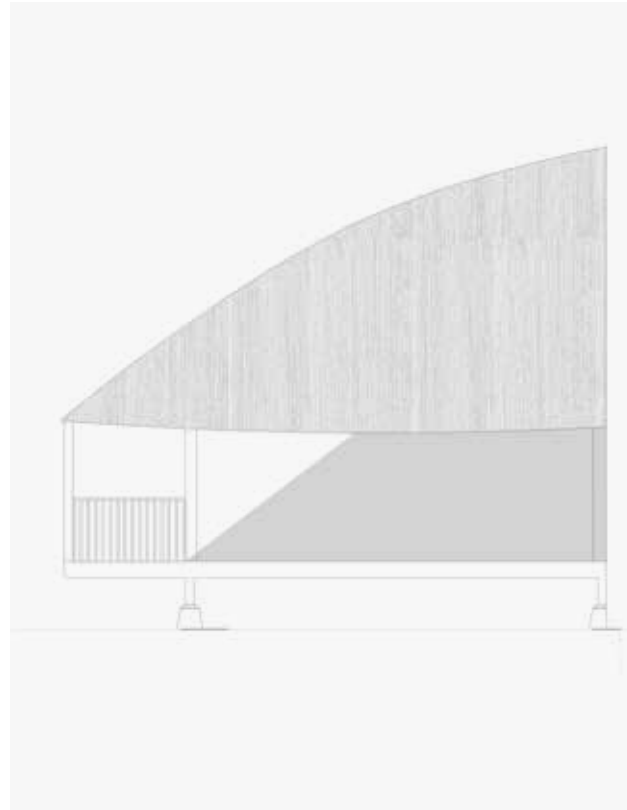
Floor plan 1:50 | house group



Interior visualization | house group



Roof I facade I construction 1:25



Floor plan I construction 1:25



Visualization I house group



Interior visualization I double bedroom

Jimbaran Resort
Marzena Henschel & Rabia Kabagac



Jimbaran Resort

Marzena Henschel & Rabia Kabagac

The 'Jimbaran Resorts' design combines traditional Balinese architecture with modern requirements. The aim is to create a harmonious connection between nature and architecture that fosters peace and relaxation. The design is based on traditional principles of Balinese architecture: a clear division into buildings, natural materials such as bamboo, wood and thatch, as well as an organic embedding into the landscape. Typical elements such as the 'Aling-Aling' protective wall, intended to keep out 'evil spirits', as well as representative entrance pillars and gates characterise the design. The resort is divided into two guest areas: The upper part comprises the communal pavilions and open spaces, while the lower part, facing the water, offers exclusive pavilions for overnight guests, shielded from each other by greenery. The resort promotes relaxation thanks to its open-plan design and the way it is embedded into tropical nature.



Black map



First sketch



Site plan 1:500



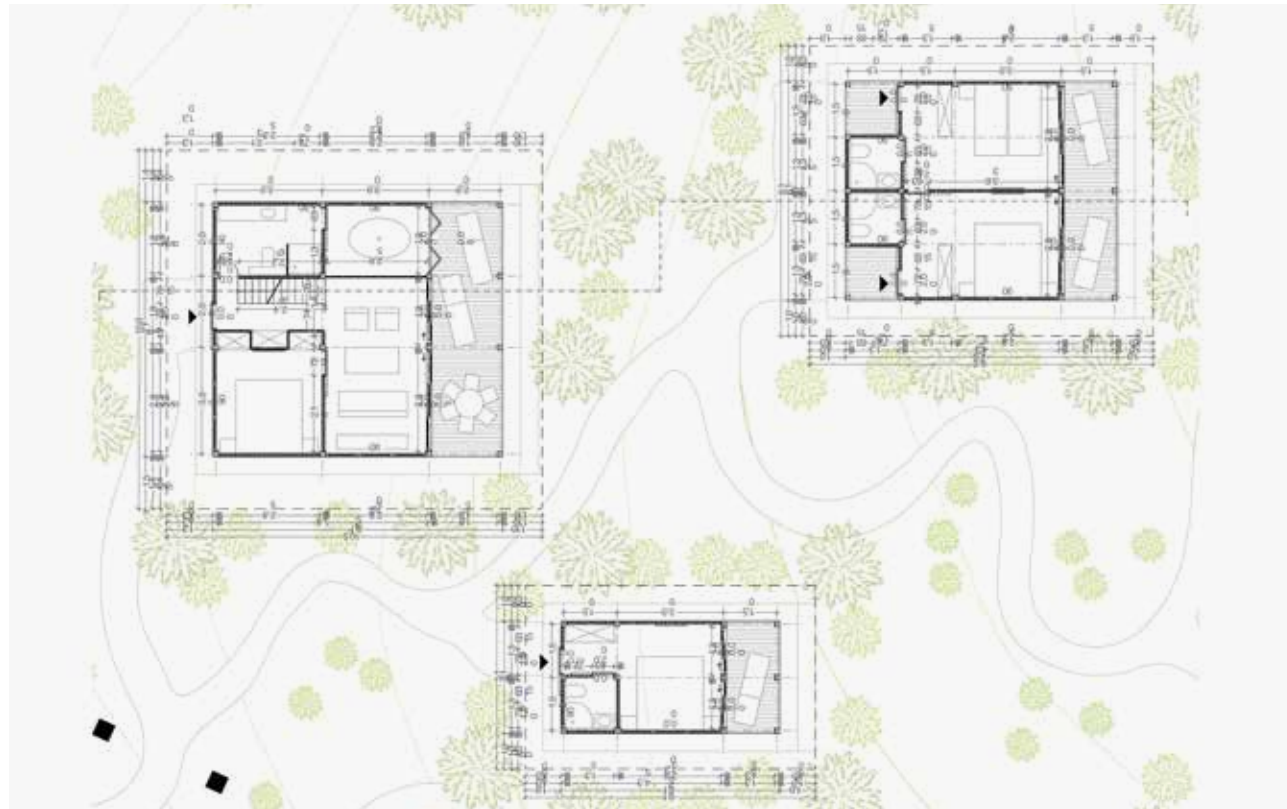
Floor plan 1:200



Section east-west 1:200



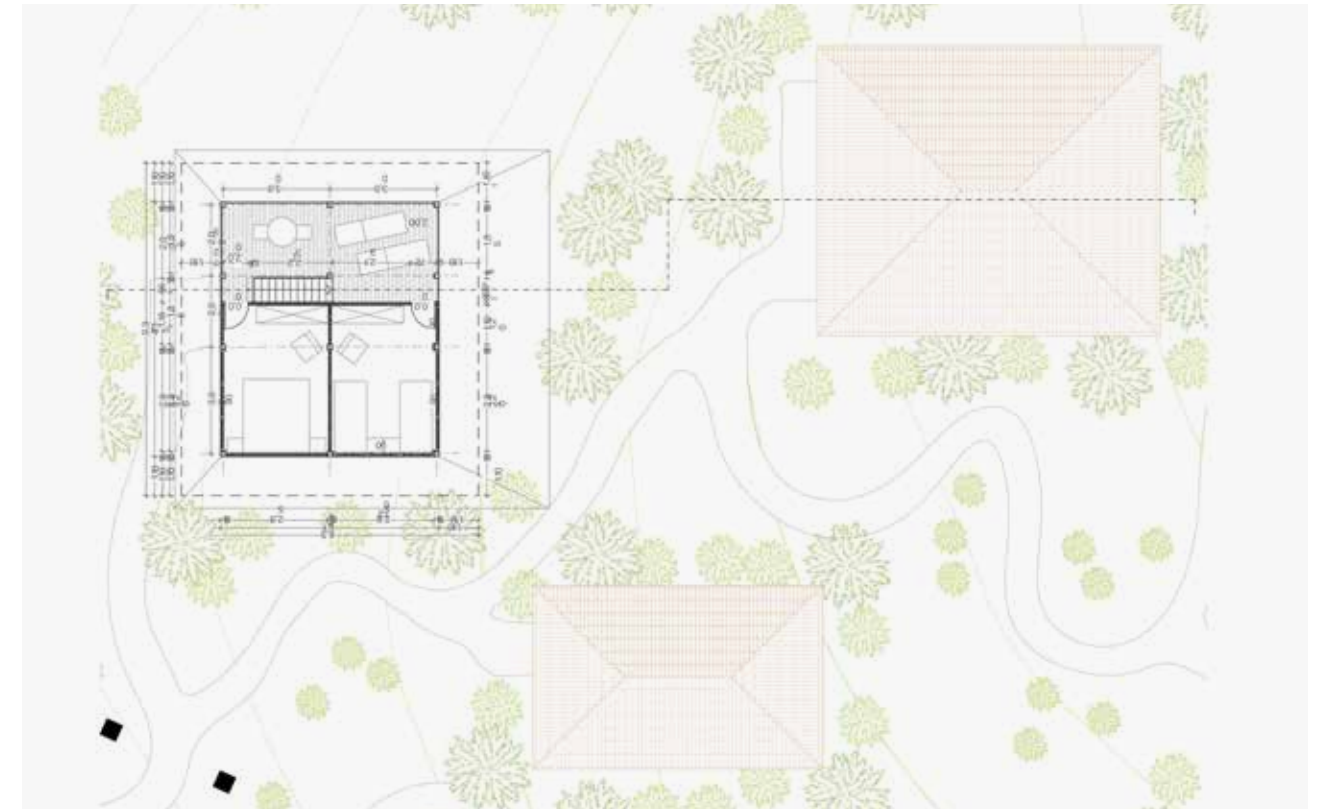
Elevation west 1:200



Floor plan I house group 1:50



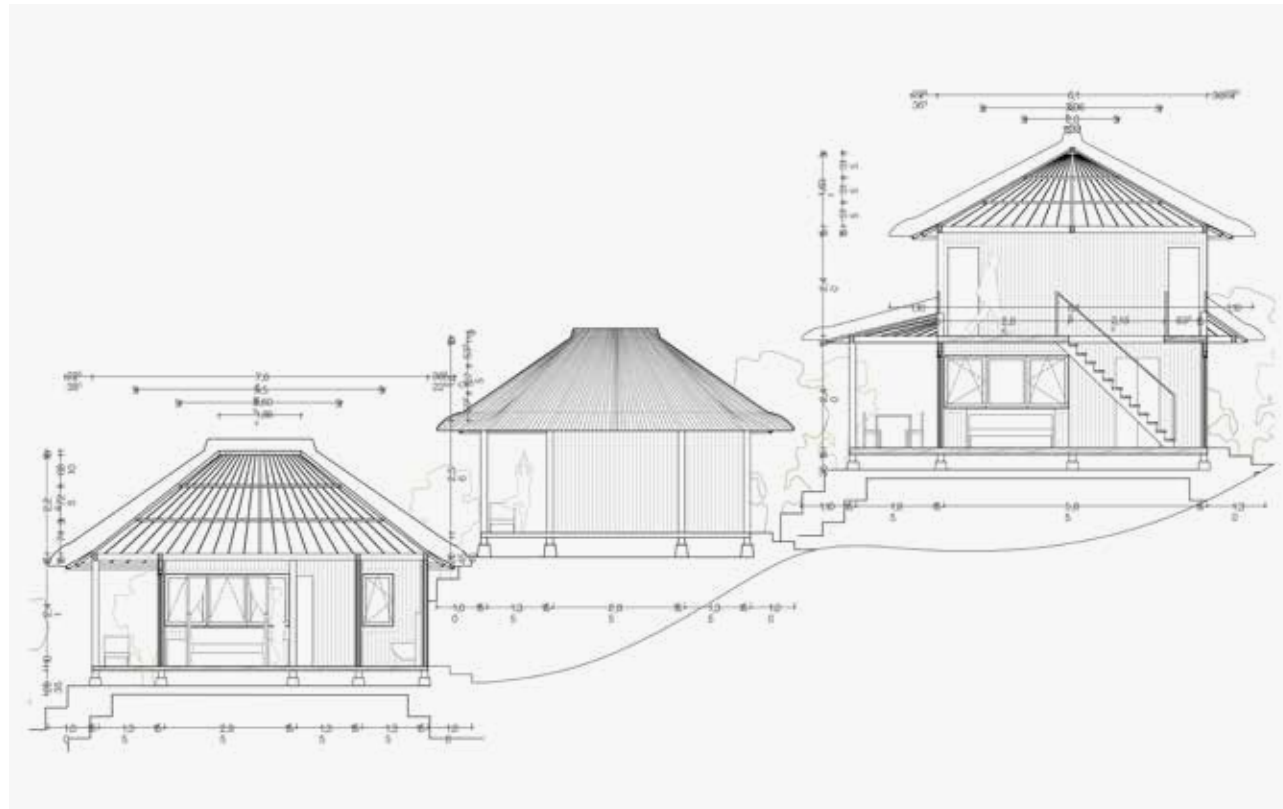
Visualization I outdoor space



Floor plan I top floor 1:50



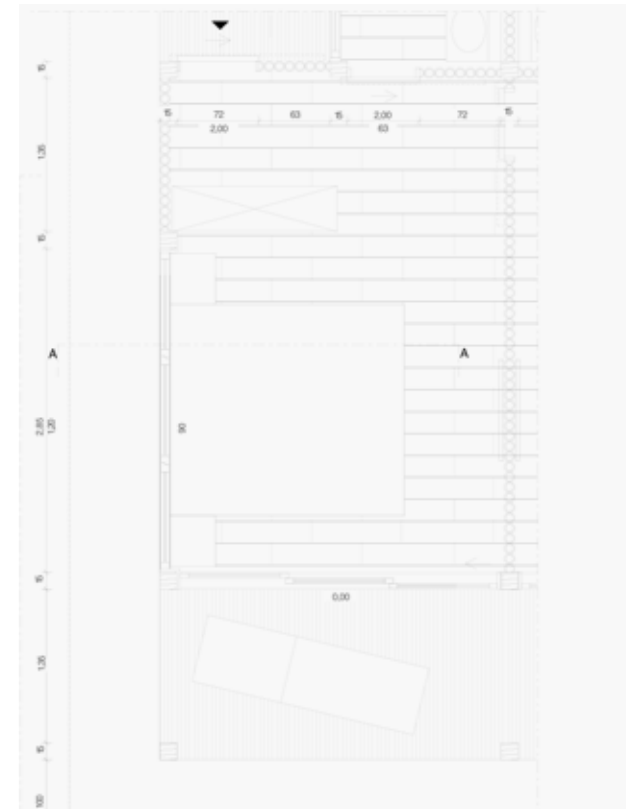
Interior visualization I double bedroom



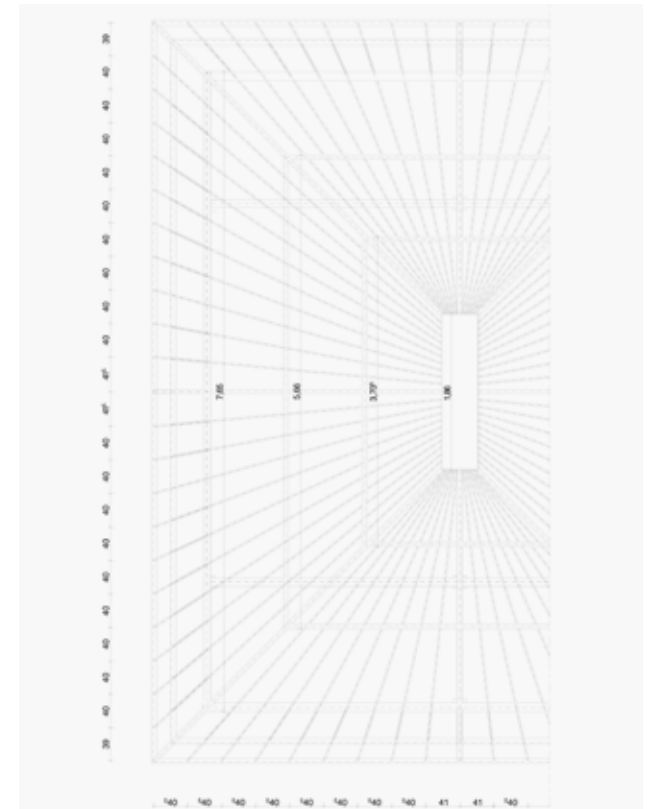
Section I house group 1:50



Part elevation I construction 1:25



Part floor plan I construction 1:25



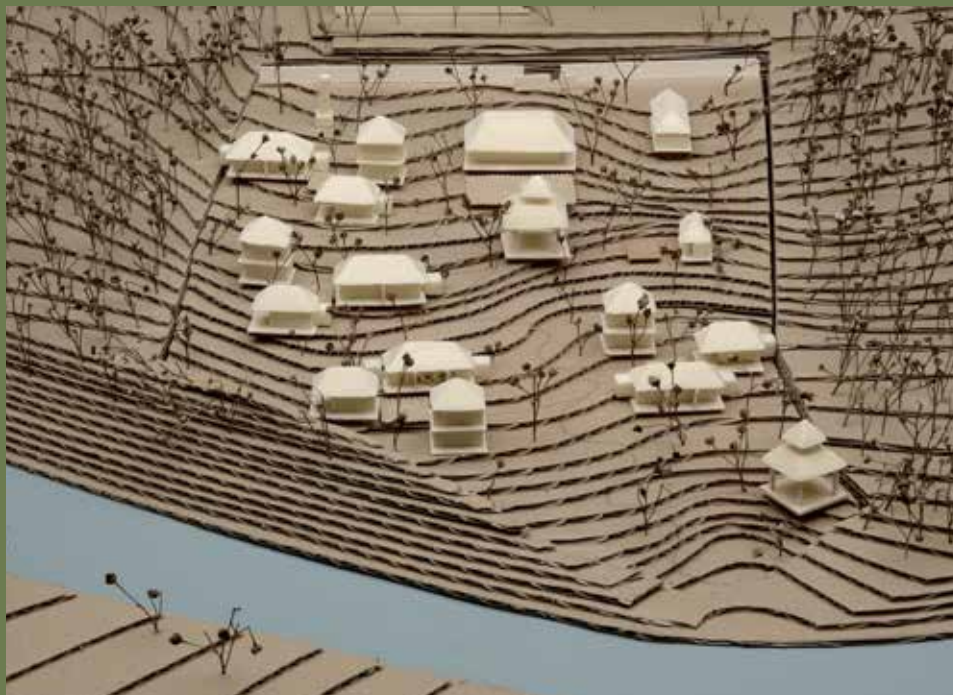
Roof construction 1:25



Facade section I construction 1:25

Harmony Home

Patrick Raab & Celine van Eden



Harmony Home

Patrick Raab & Celine van Eden

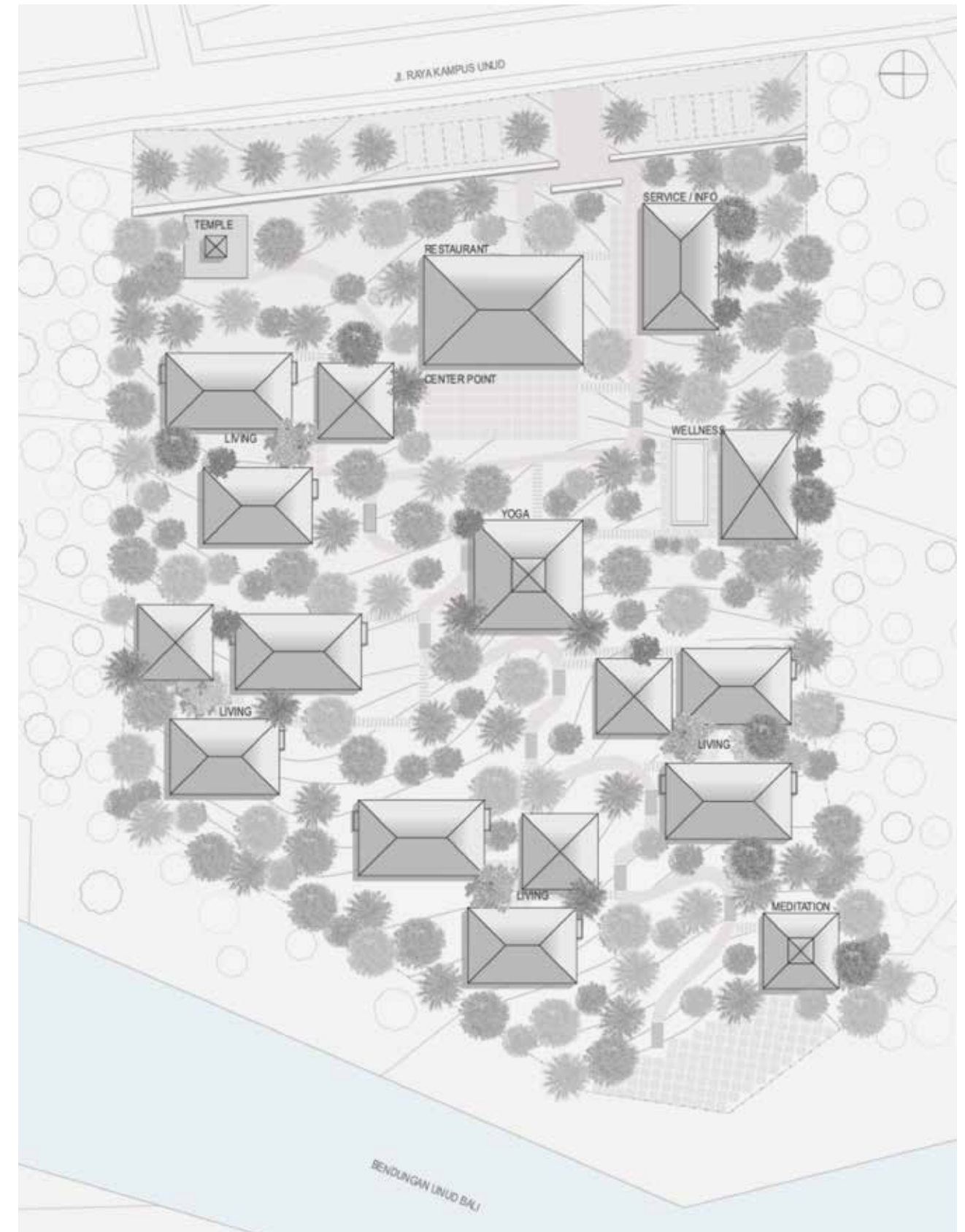
'Harmony Home' is a resort concept inspired by the spatial organisation of traditional Balinese villages that balances the layout of the resort between communal interaction, private retreat and respect for the topography, climate and building traditions of the island. A central plaza, together with the restaurant and yoga temple, create a vibrant social meeting place and encourage community social interaction within the resort. The design of the pavilions follows Balinese building tradition and a carefully planned hierarchy of spaces. The individual village-like 'living clusters' create privacy and fit harmoniously into the context. Each cluster includes exemplary: family flats, vertically stacked single and deluxe rooms. This is to offer high flexibility for different guest preferences. The use of local materials such as wood and stone is designed to enhance authenticity and sustainability.



Black map



First sketch



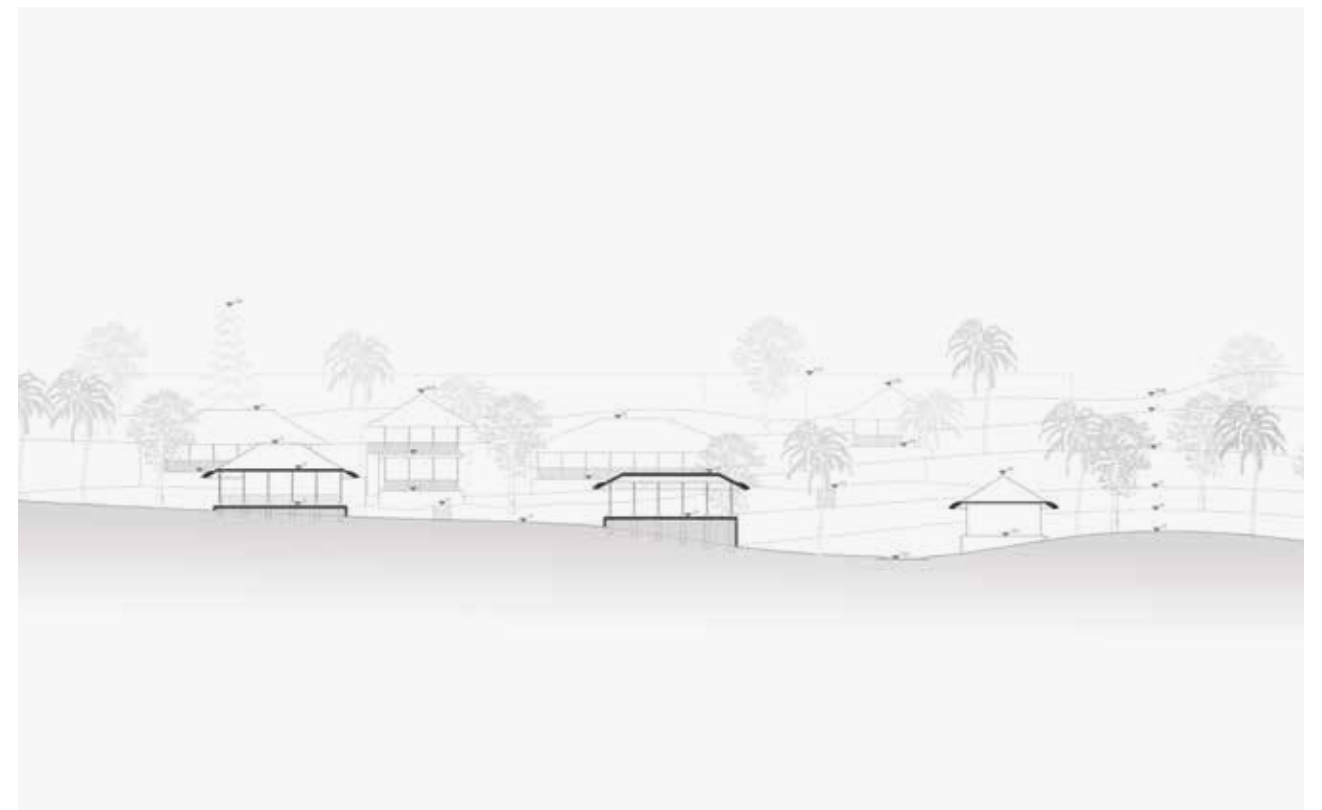
Site plan 1:500



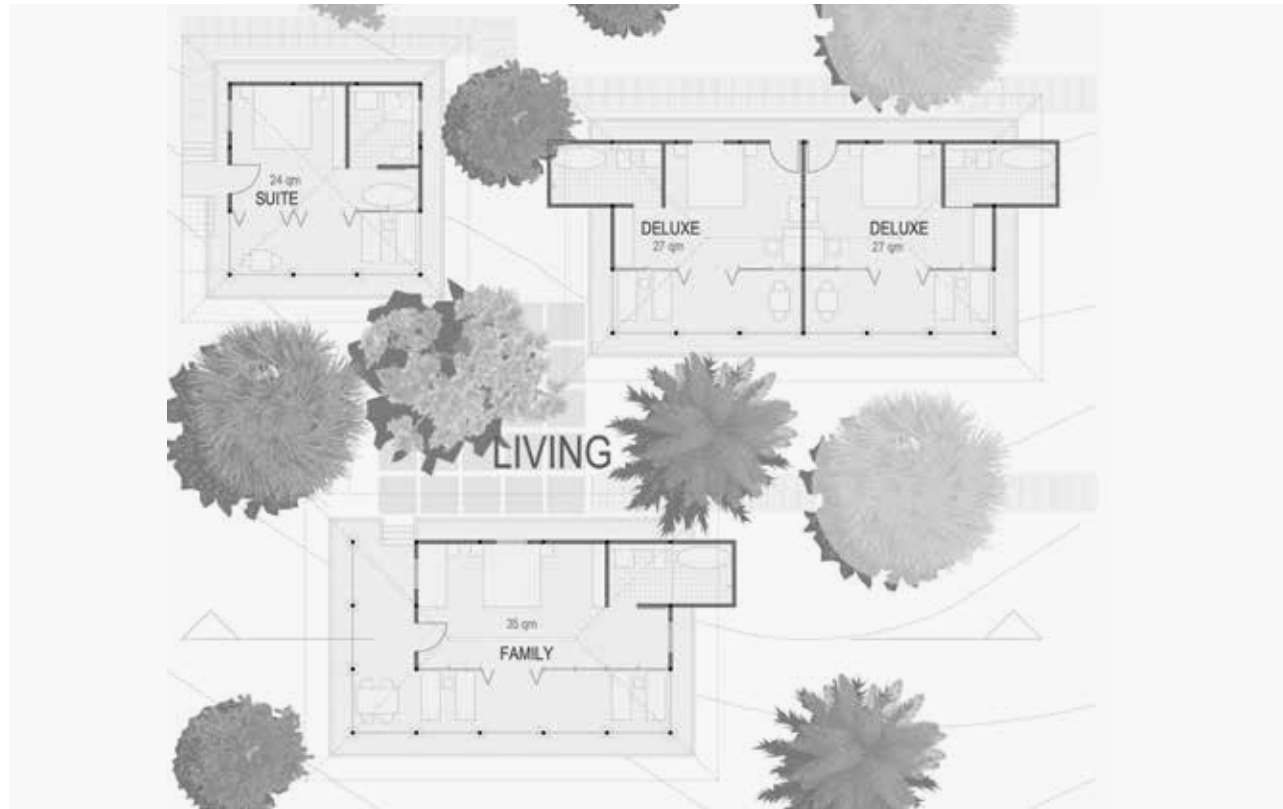
Floor plan 1:200



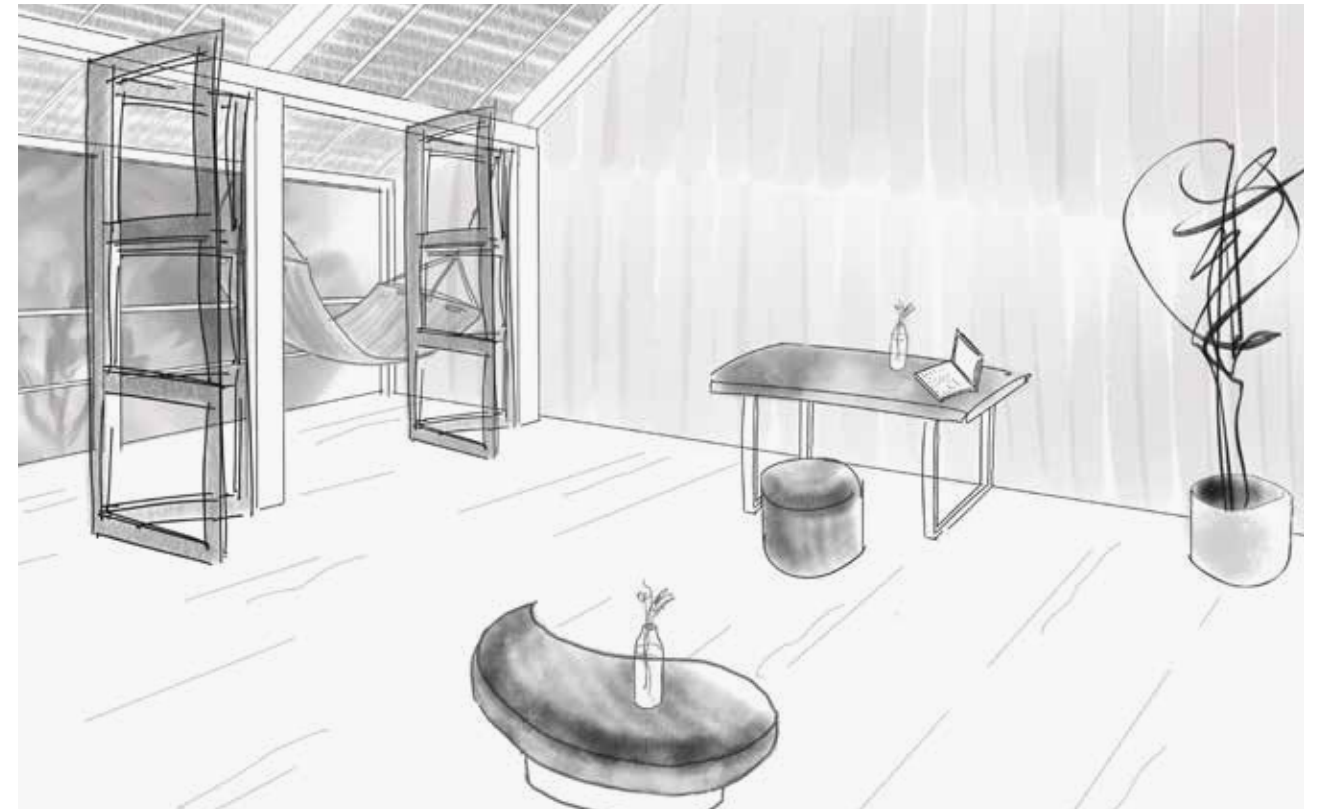
Cross section east-west 1:200



Elevation 1:200



Floor plan | house group 1:50



Interior visualization | bedroom



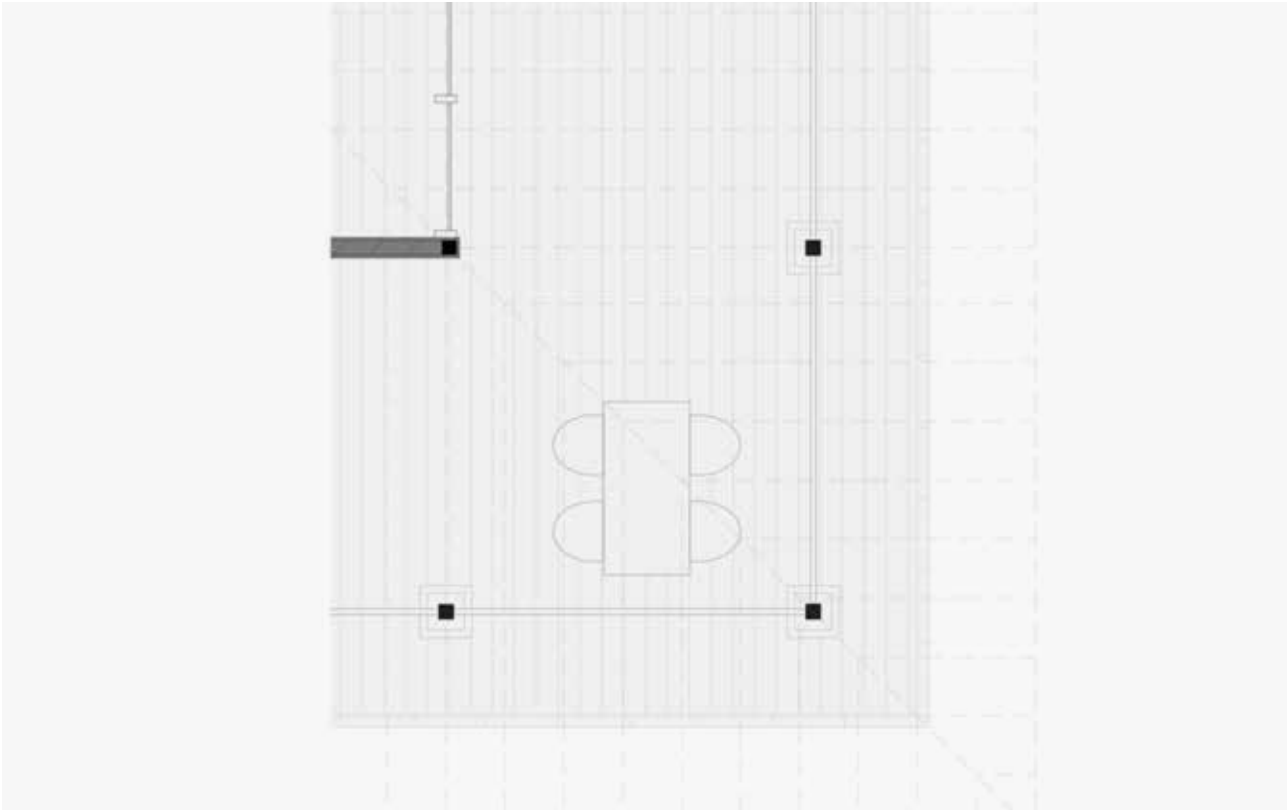
Section | house group 1:50



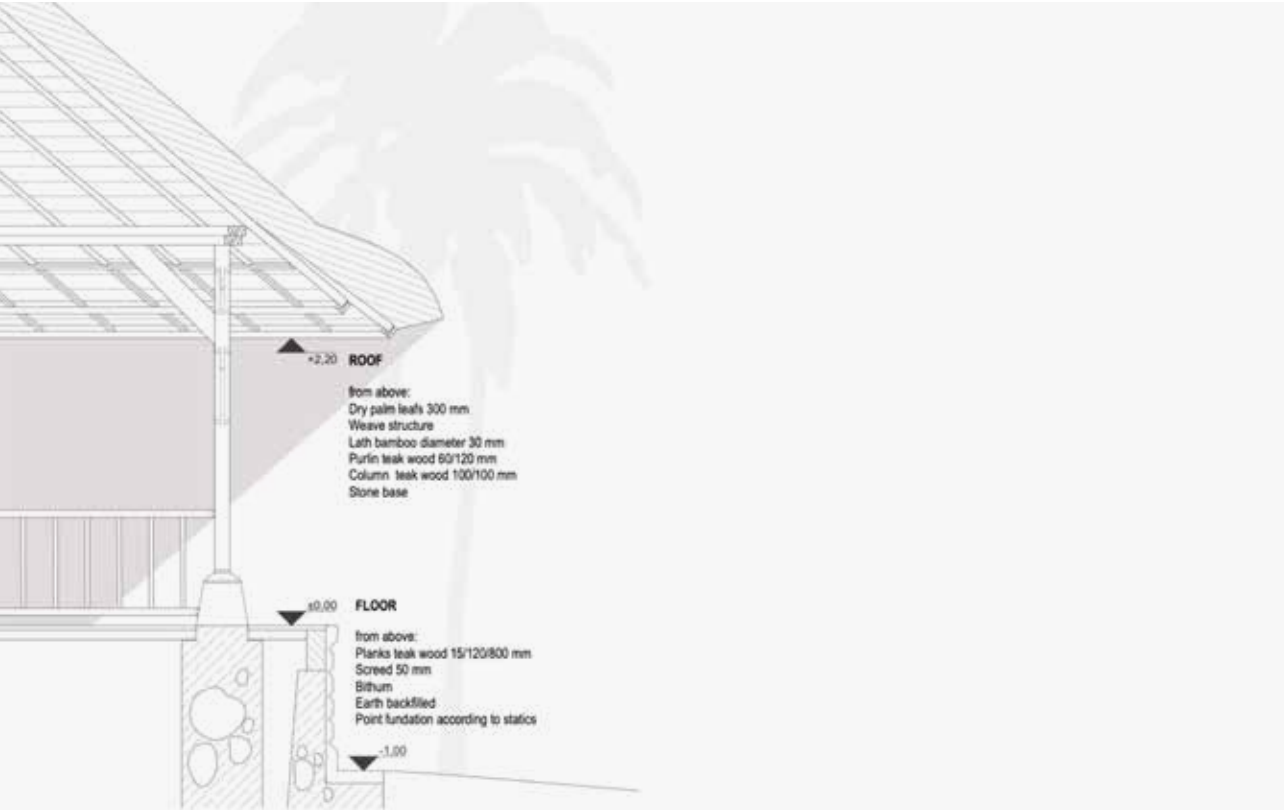
Visualization | yoga wantilan



Part elevation I construction 1:20



Part floor plan I construction 1:20

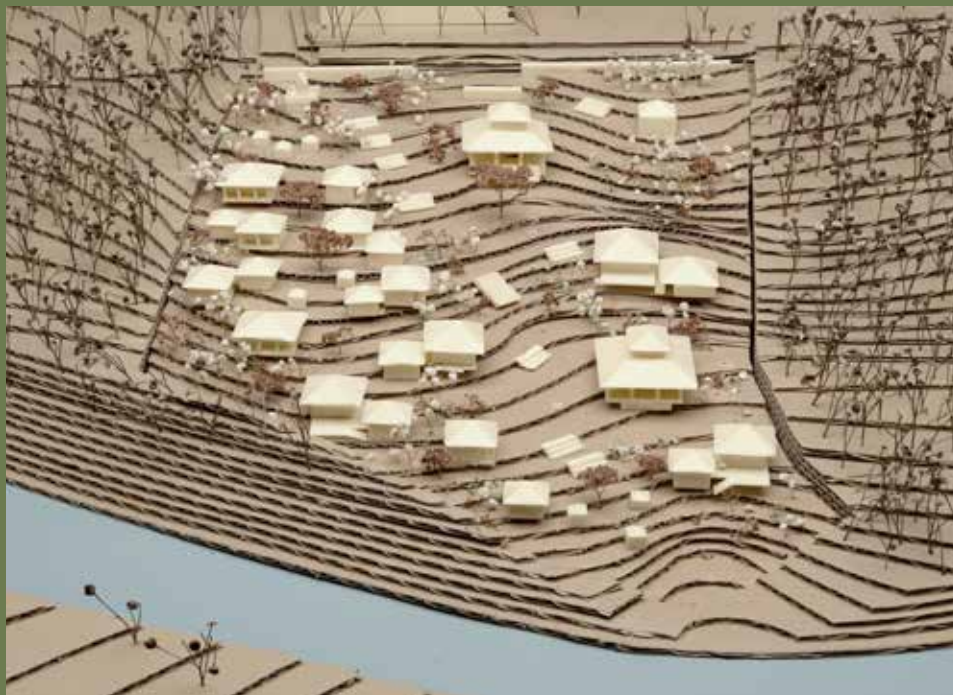


Part section I construction 1:20



Materials I moodboard

Sustainable Resort Bali
Süra Örgen & Lakgitha Thanendran



Sustainable Resort Bali

Süra Örgen & Lakgitha Thanendran

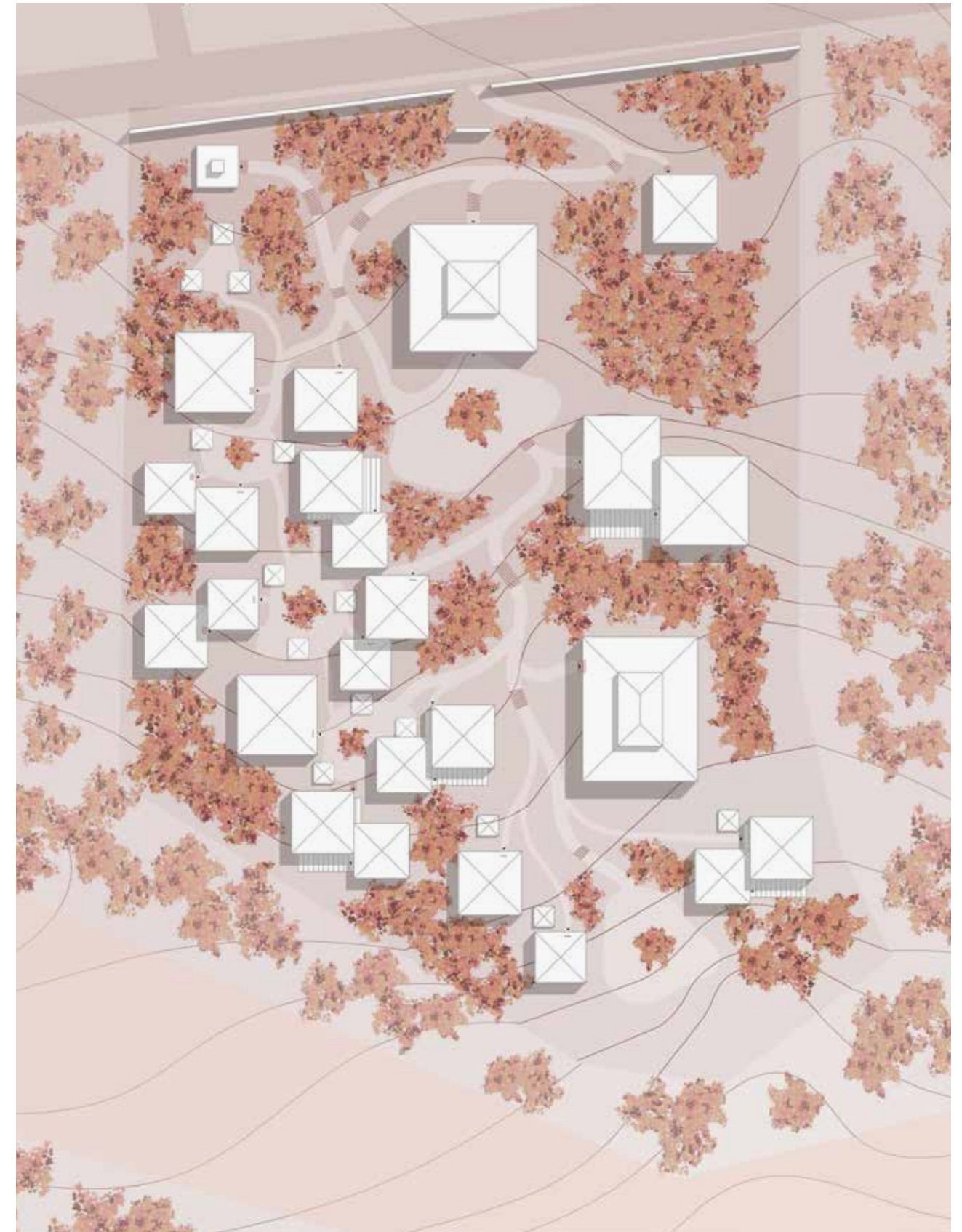
The site for the 'Sustainable Resort Bali', which has a steep hillside location with a view of the river, is located on the southern peninsula of Bali, close to Udayana University. A pavilion for reception and staff is located close to the resort's entrance. From there, guests can access the large 'Wantilan' pavilion, which is an important centre and meeting point for all visitors as a flexible space for yoga and dance events. Down the slope is the spa with terrace and massage room in a private atmosphere. A large restaurant with a terrace overlooking the water offers culinary delights. To the west of the property, the residential units (double rooms, single rooms, suites) of different sizes are loosely arranged down the slope. Small open pavilions offer space for relaxation or for fruit and flowers collected from the garden. The resort has a very harmonious and traditional design with materials typical for the region.



Black map



First sketch



Site plan 1:500



Floor plan 1:200



Section east-west 1:200



Elevation west 1:200



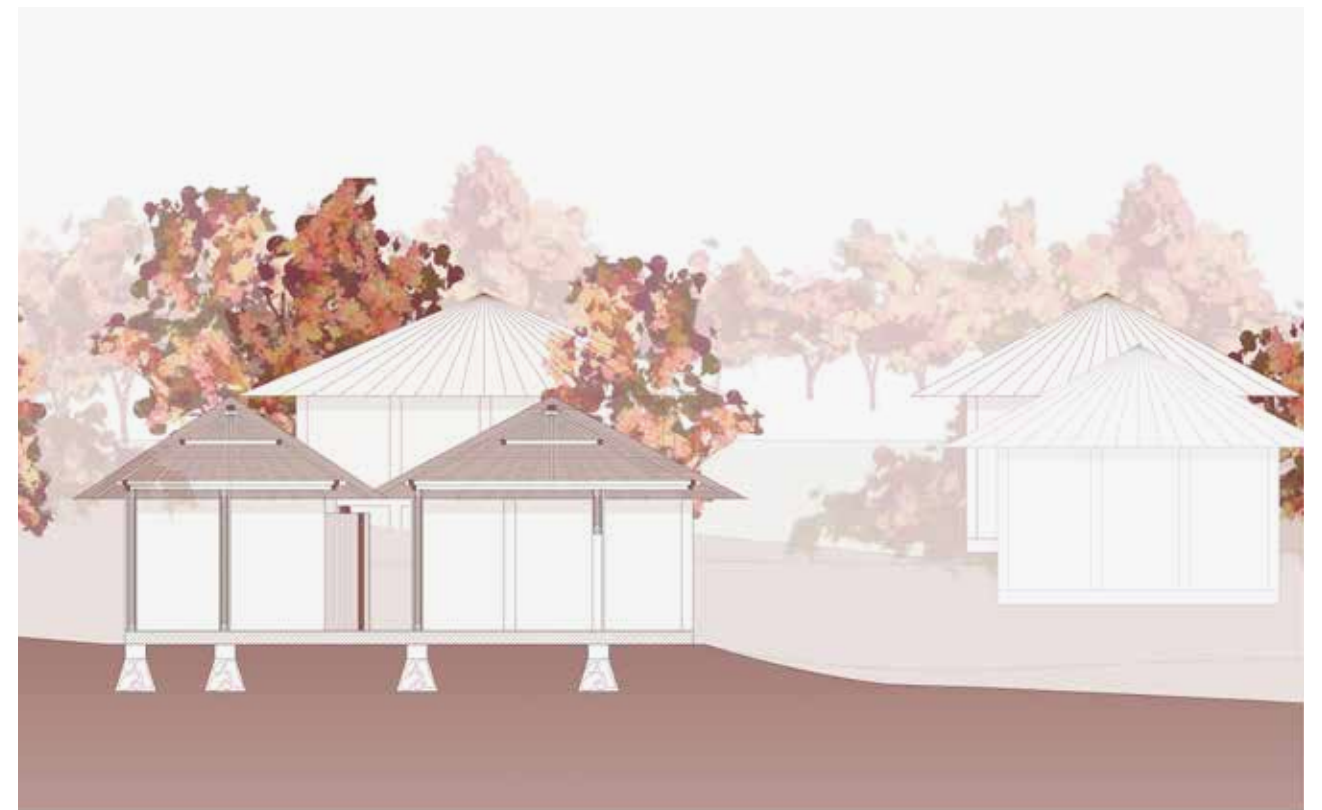
Floor plan I house group 1:50



Visualization I yoga wantilan



Section I house group 1:50



Section I house group 1:50



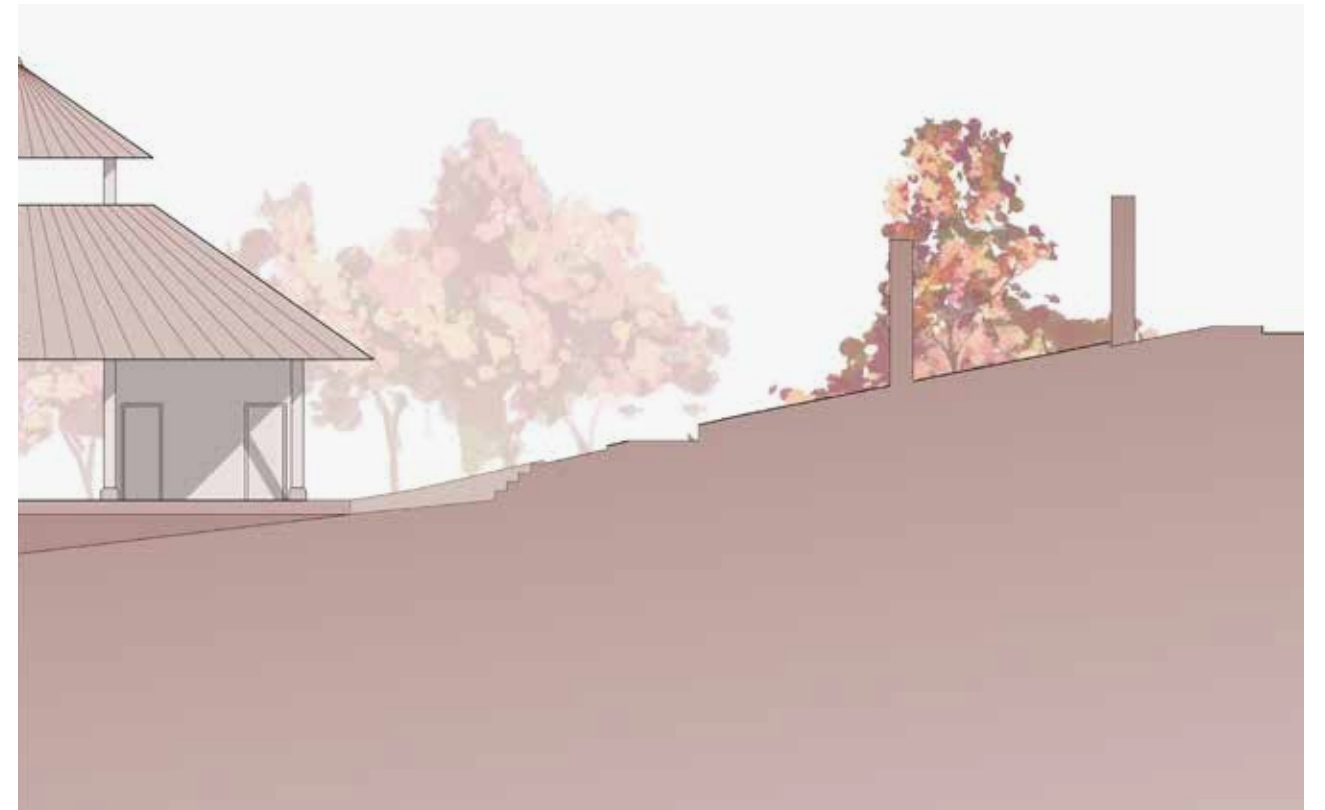
Visualization | construction



Visualization | yoga wantilan

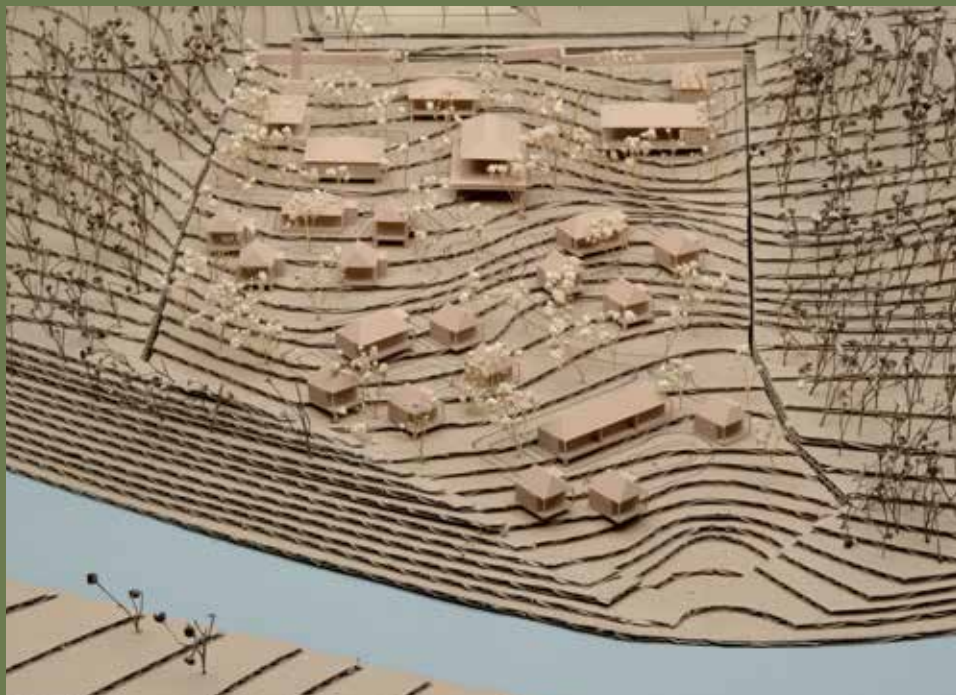


Facade section | yoga wantilan 1:50



Facade section | yoga wantilan 1:50

Desa Harmoni: Living in harmony
Ali Ekin & Kaan Kamali



Desa Harmoni: Living in harmony

Ali Ekin & Kaan Kamali

The 'Desa Harmoni' design combines the concept of the traditional Balinese village (Desa) in harmony with nature, culture and architecture. The resort is designed to blend into the existing topography and respect the open landscape. With a total of eighteen residential units (to host 47 guests), organised in four groups, independent 'villages' are created that reflect the character of traditional Balinese 'desas' and offer a balance of privacy and community. This is complemented by public facilities that offer guests a wide range of experiences and activities. Among the most important are a stylish restaurant that celebrates the flavours of Balinese cuisine and a wellness oasis that works with traditional healing methods. The architecture utilises local materials from bamboo and teak to traditional style elements such as ornate carvings to create an authentic experience.



Black map



First sketch



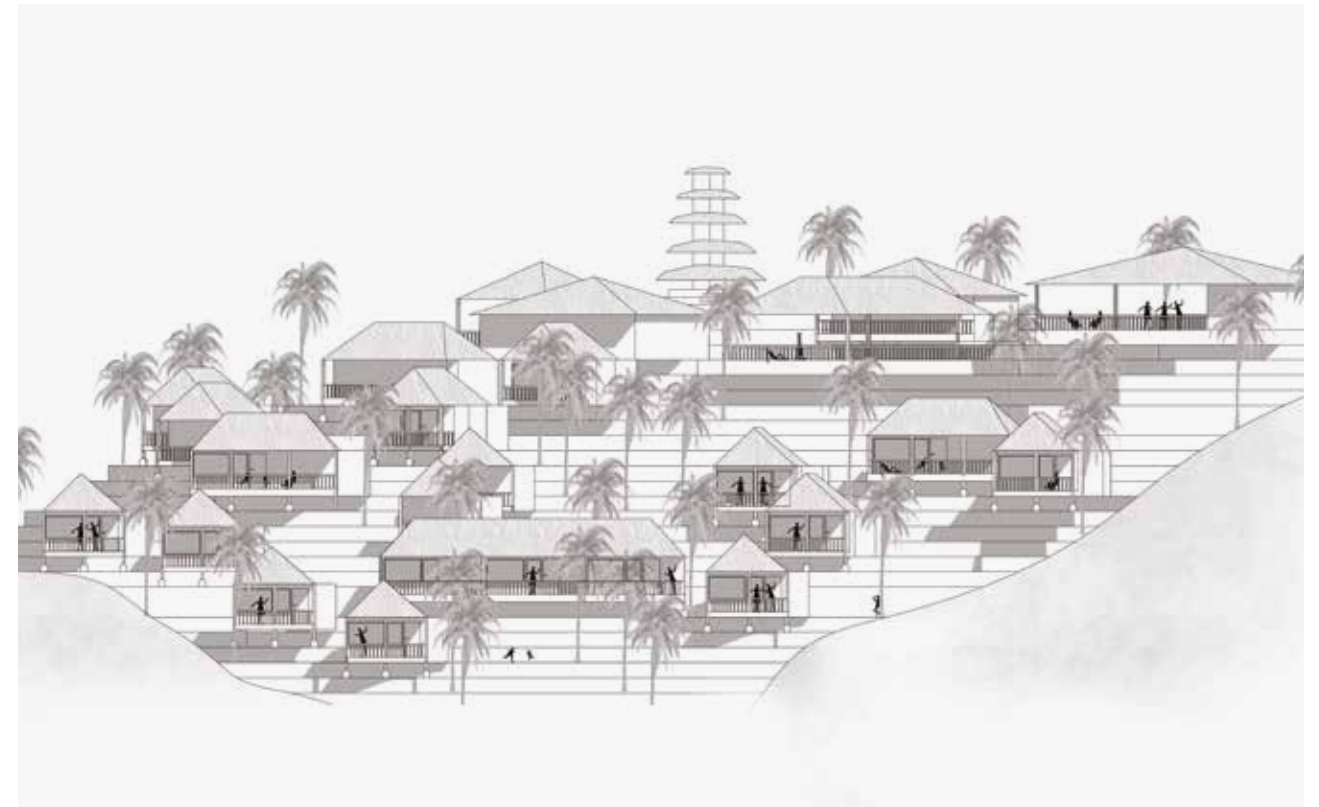
Site plan 1:500



Floor plan 1:200



Section I elevation east-west 1:200



Elevation 1:200



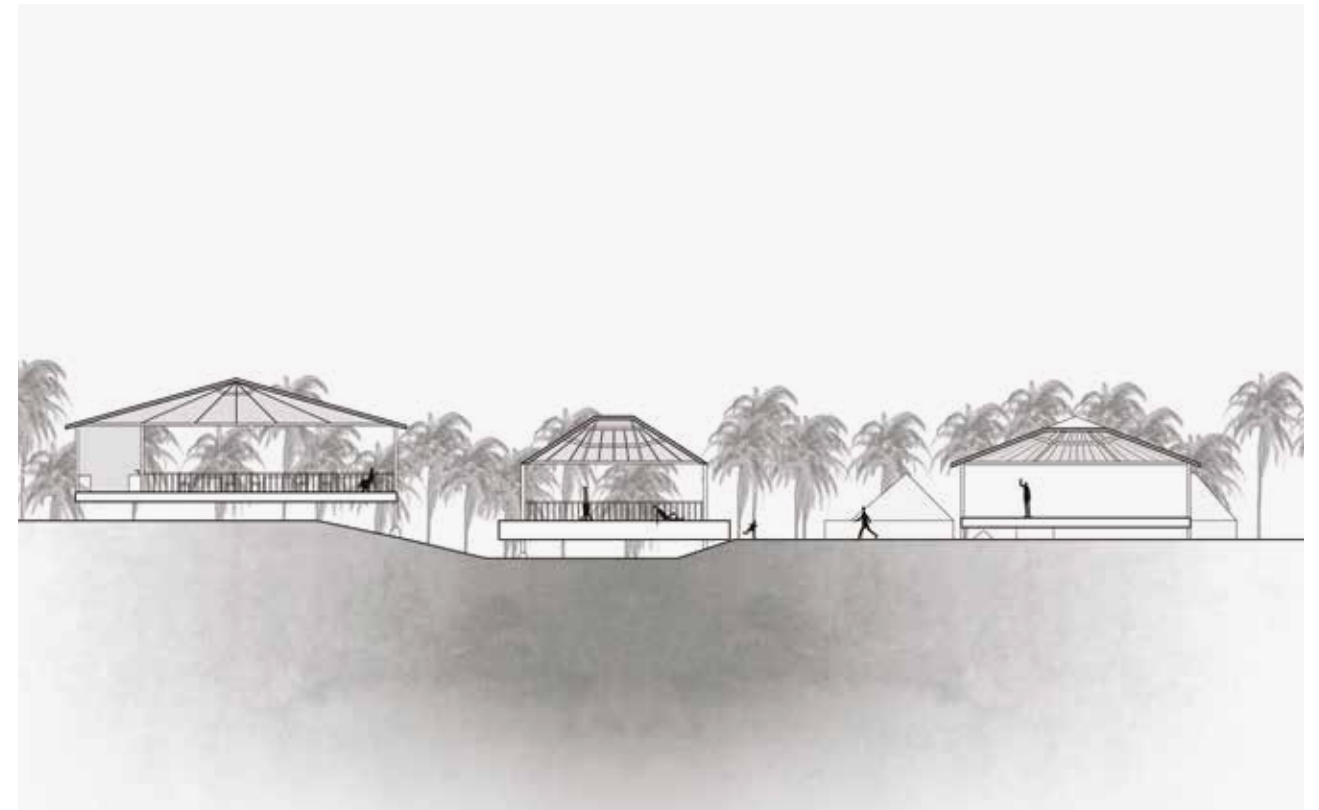
Floor plan | house group 1:50



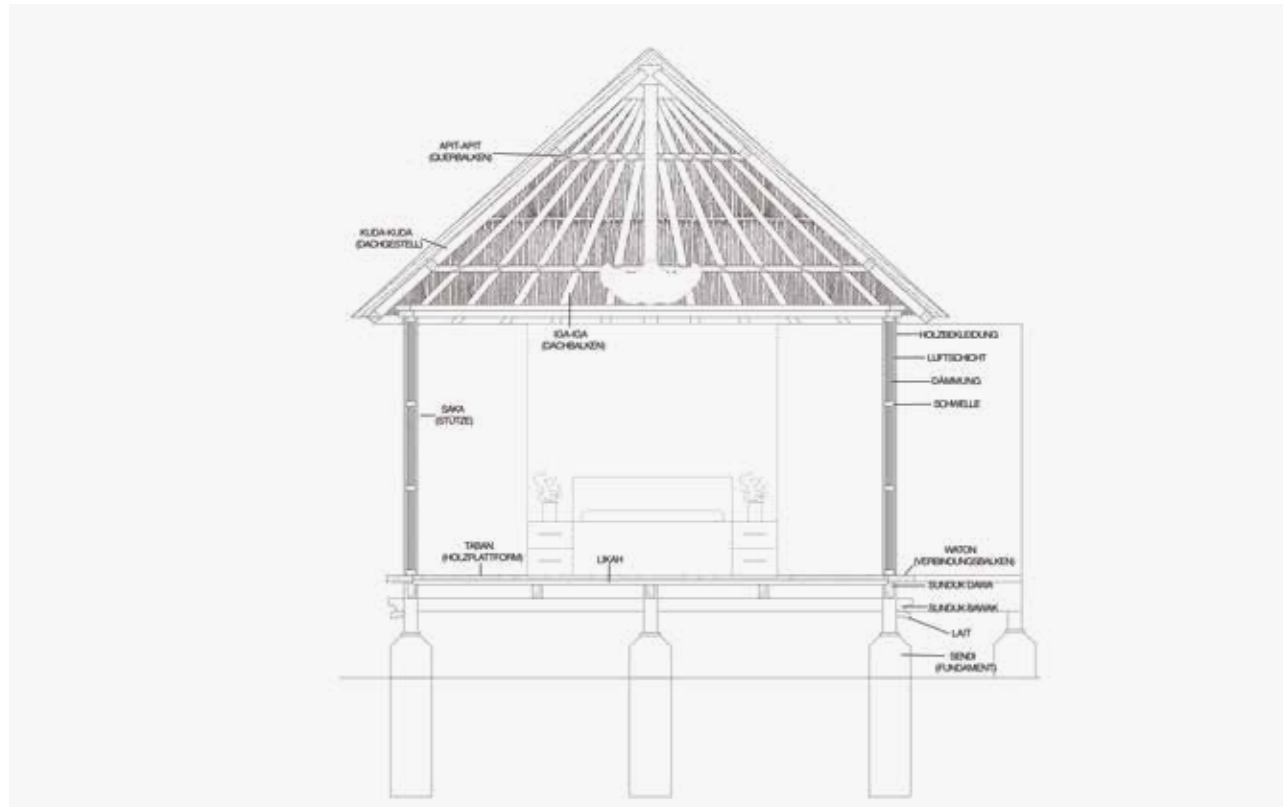
Section | house group 1:50



Visualization | space



Elevation west | public space



Facade section | construction 1:25



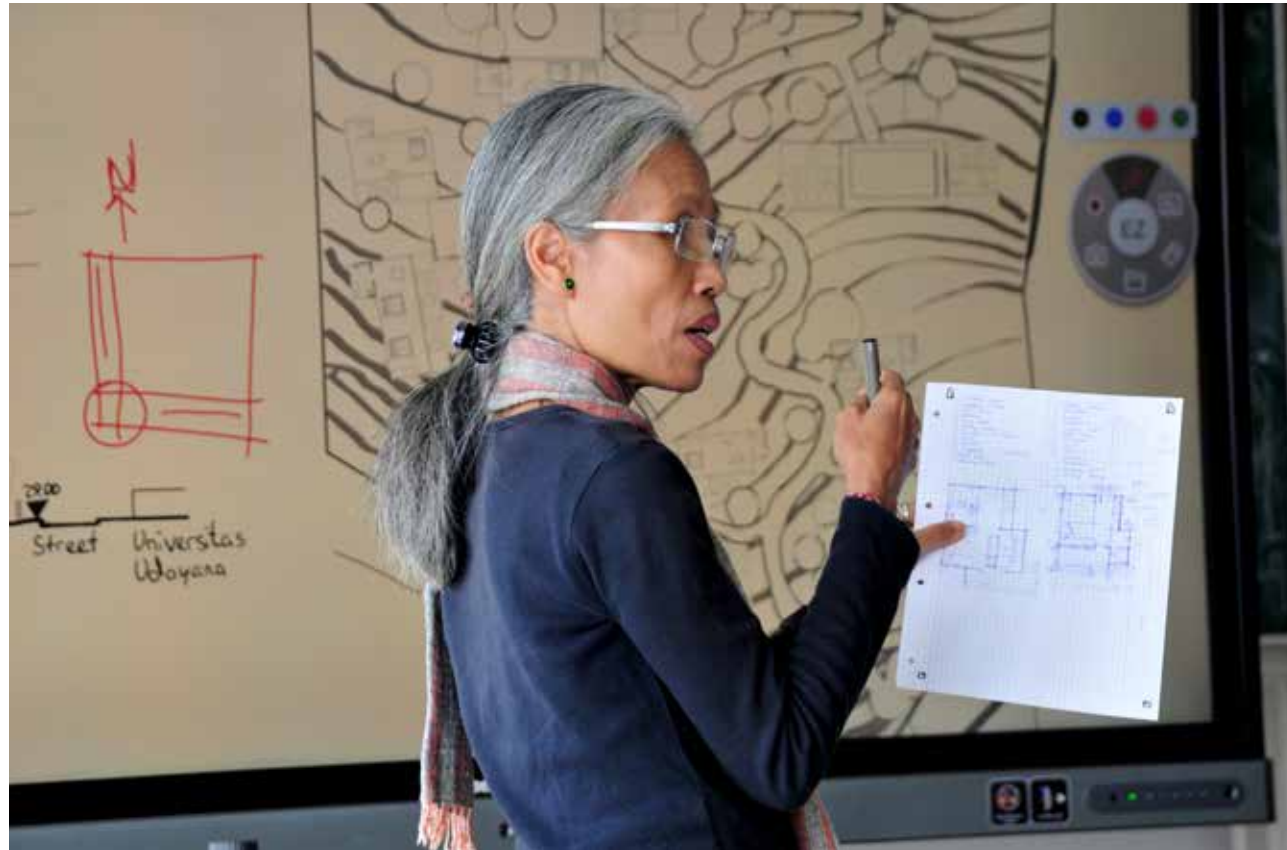
Floor plan | construction 1:25



Facade elevation | construction 1:25



Visualization | interior | bathroom



Imprint

Publisher

Department of Architecture Dortmund
University of Applied Sciences and Arts

Conception and editing

Prof. Christine Remensperger

Graphic design and realization

Laura Wiederhold

Photography

Guido Kollert
Gabriele Marl

Printing and binding

Knipp Medien und Kommunikation GmbH
Martin-Schmeißer-Weg 9
44227 Dortmund, Germany

1. Edition

30 copies

© 2025 Faculty of Architecture

Dortmund University of Applied Sciences and Arts
All contents and designs are protected by copyright!

Students | Bachelor of Architecture

Kübra Büyükdag
Ali Ekin
Marzena Henschel
Rabia Kabagac
Kaan Kamali
Jonathan Kleff
Yanick Neugebauer
Süra Örgen
Selin Özkan
Patrick Raab
Lakgitha Thanendran
Celine van Eden

Teachers

Prof. Christine Remensperger, Dortmund University of Applied Sciences and Arts
Prof. Gusti Ayu Made Suartika, Udayana University in Denpasar, Bali, Indonesia

